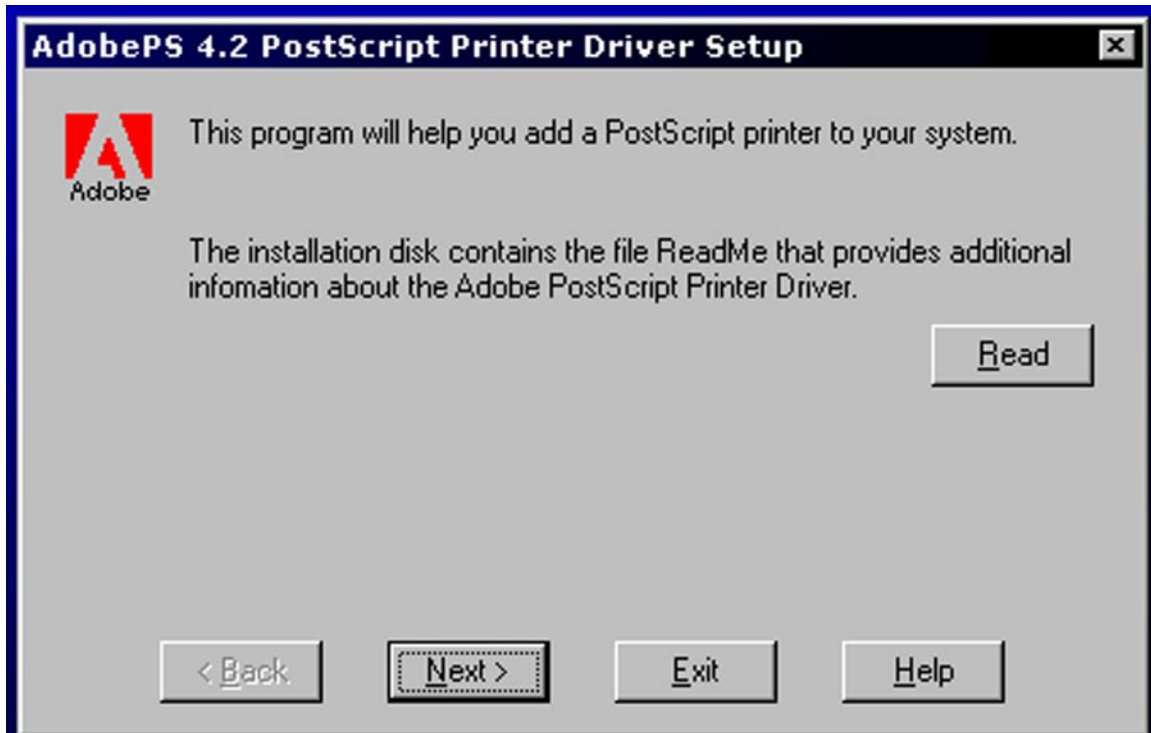
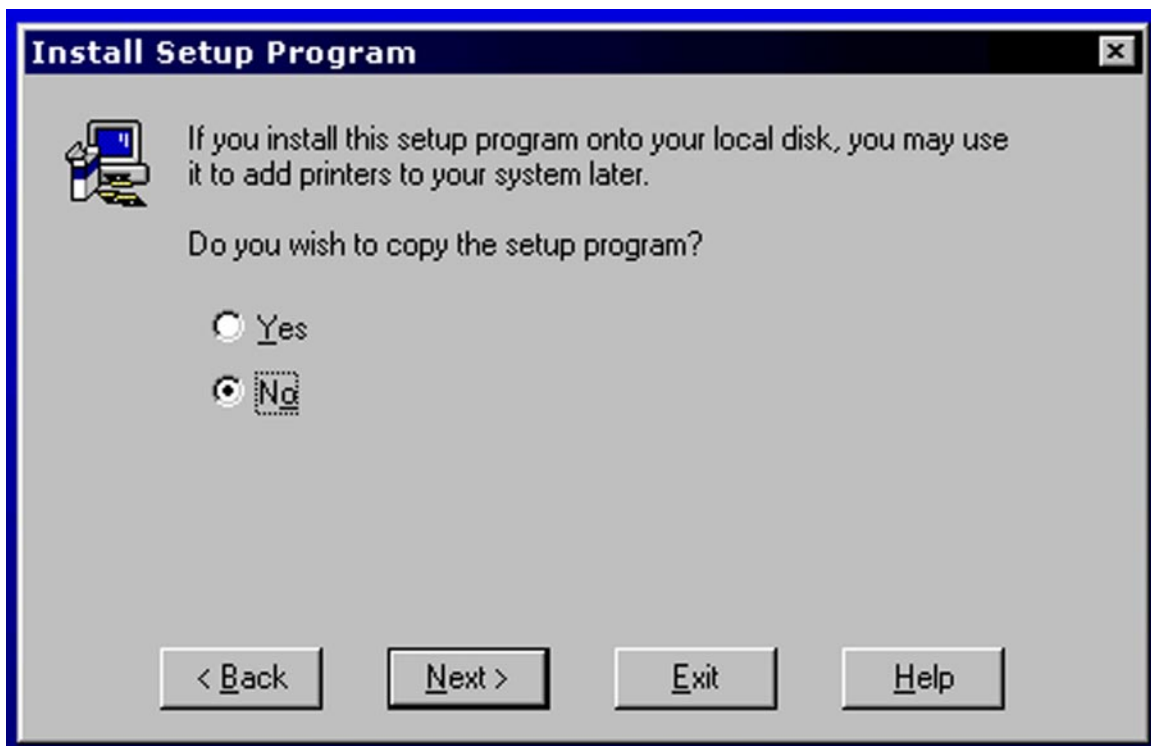


Instructions for installing Adobe PS 4.26 for Windows 95/98 And Attaching it to Acrobat Distiller for use with FrameMaker 5.5x, with Acrobat 3.0x

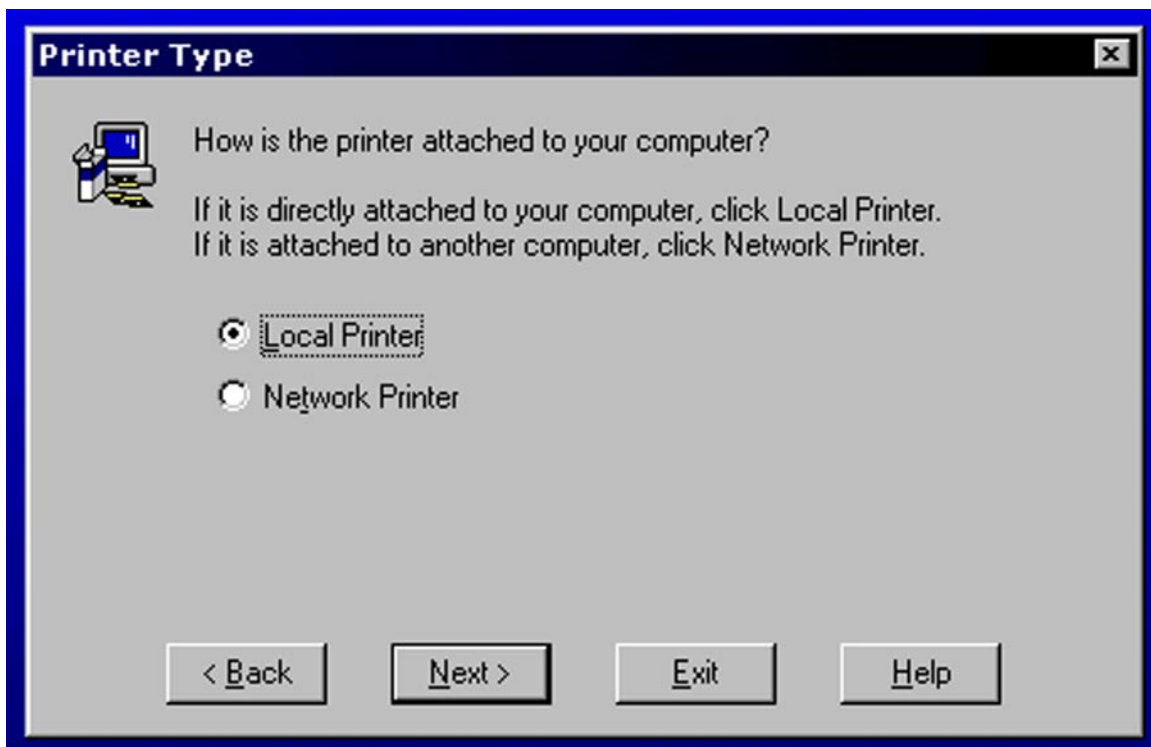
1. Go to the Adobe Website at <http://www.adobe.com/support/downloads/pdrvwin.htm> and download the Adobe PS 4.26 Driver for Windows 95/98.
2. Save the file to your desktop and then double click the file to open it.
3. Click Read, and read the ReadMe file
Then click Next.



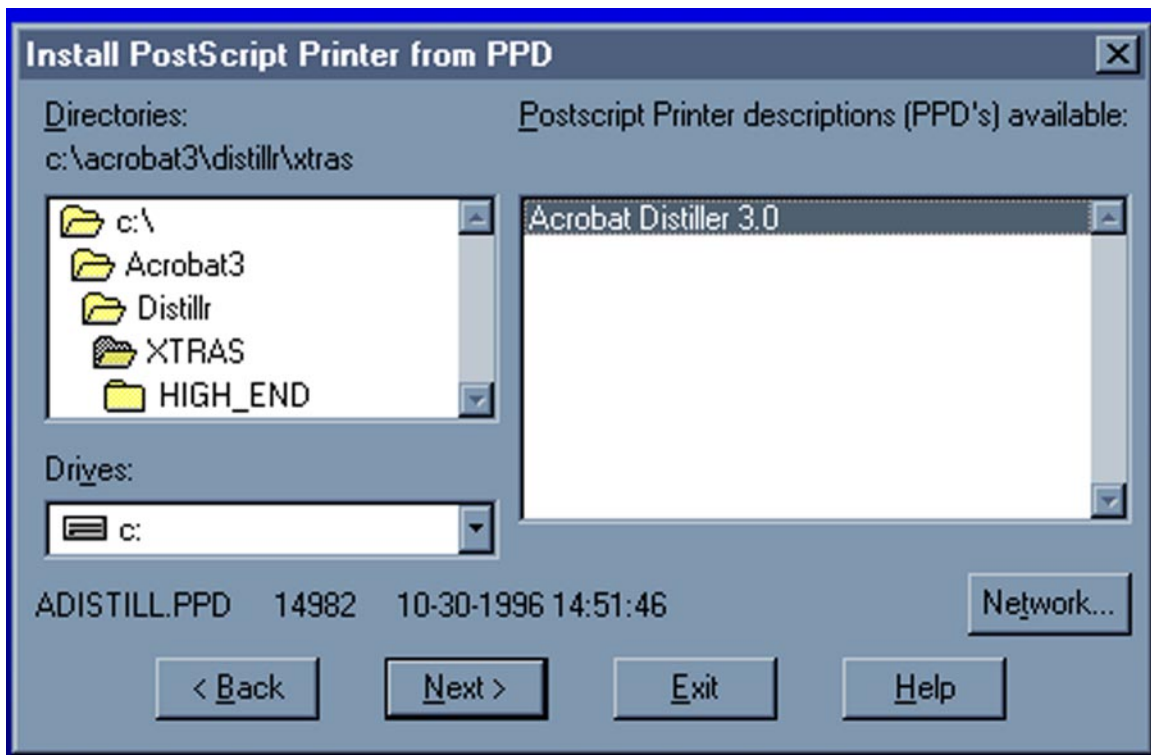
4. Select No, and then click Next.



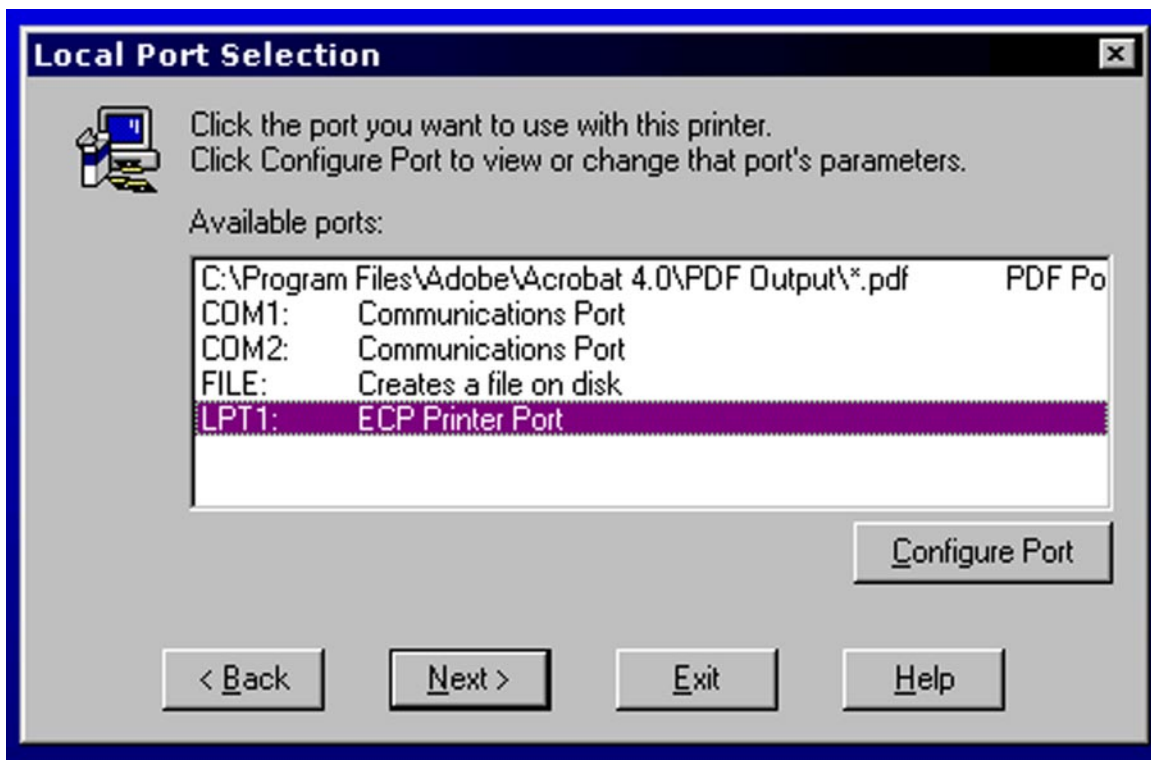
5. Select Local and then click Next.



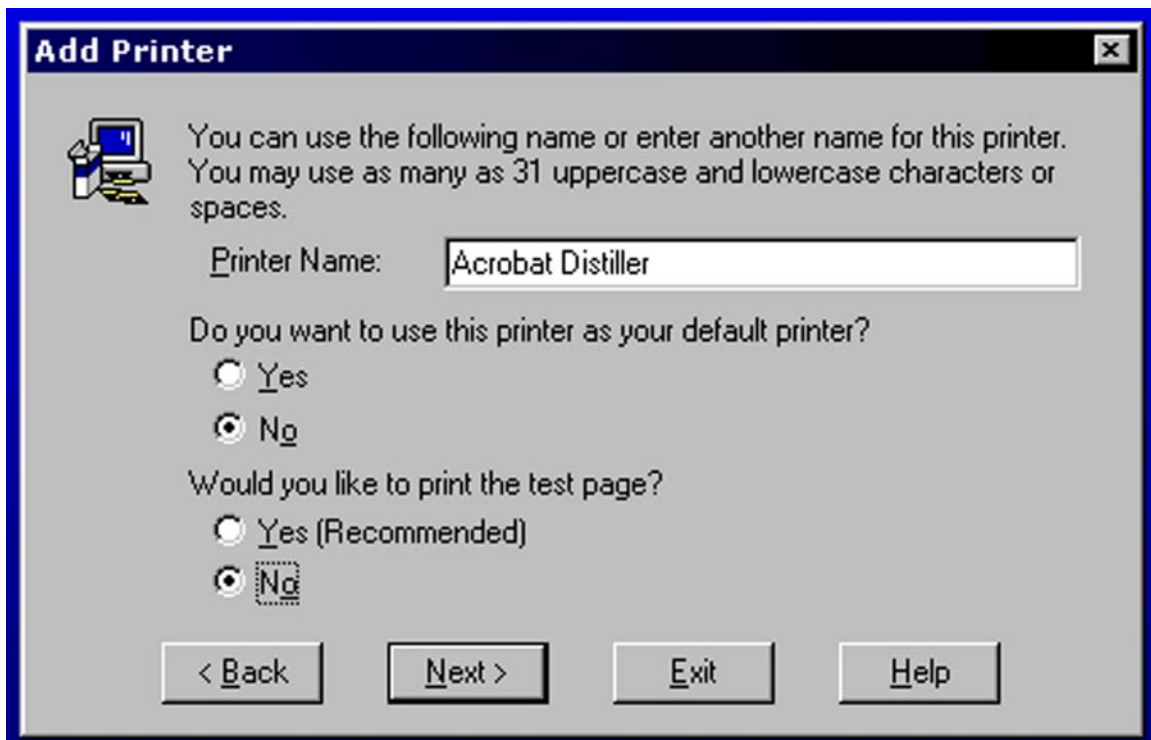
6. Browse in the Window to the C:\Acrobat3\Distillr\Xtras Directory, Select the Acrobat 3 PPD, and click next..



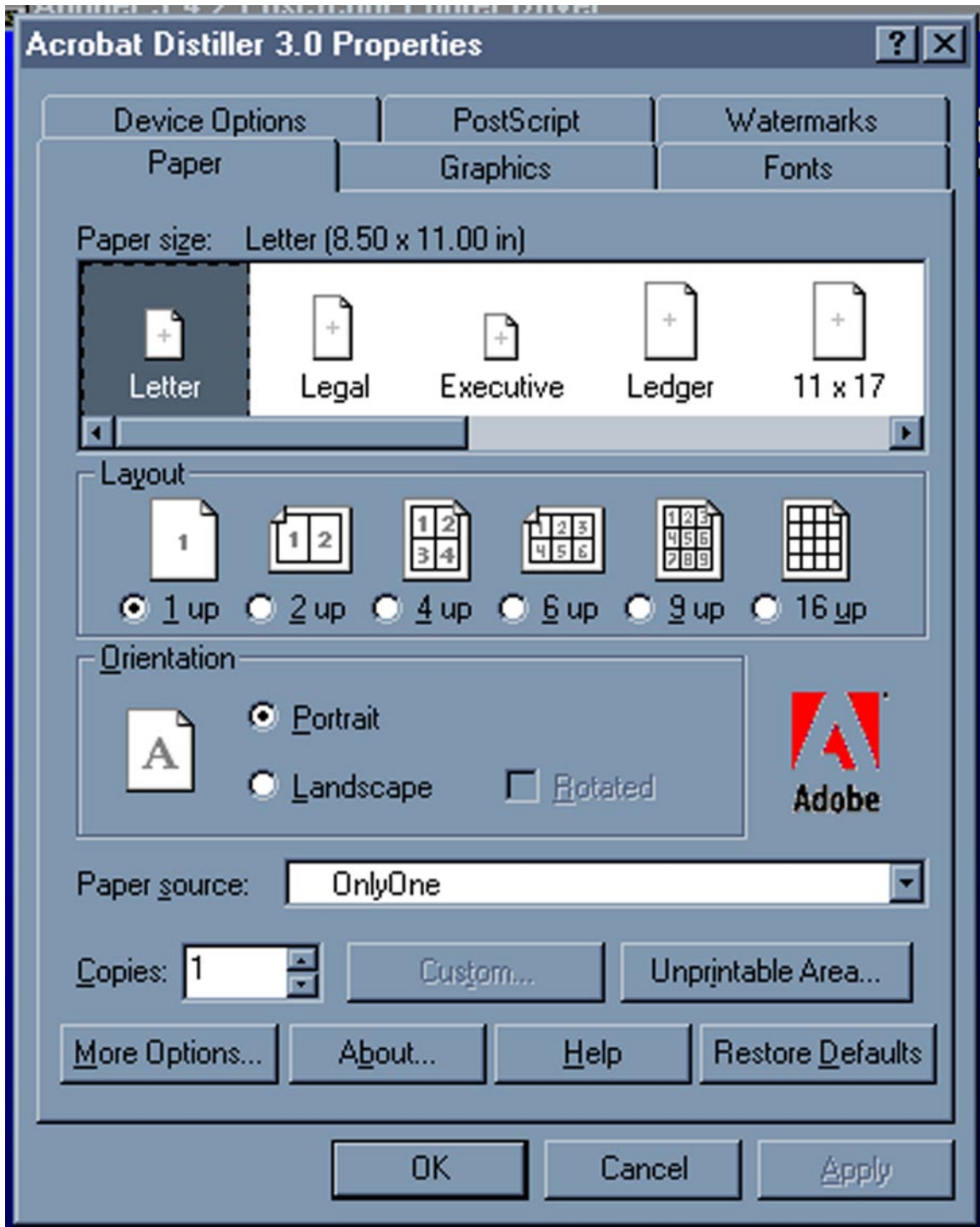
7. Select LPT1 and click next.



8. Leave the printer name as Acrobat Distiller .
Set default printer to No.
Set Printing of a test page to No.
Click Next.



9. Click OK on the Acrobat 3.0 Distiller Properties window.



10. Click Exit and installation is complete.

